



DOWNLOAD GUIDE for CPaT LOCAL PROGRAM

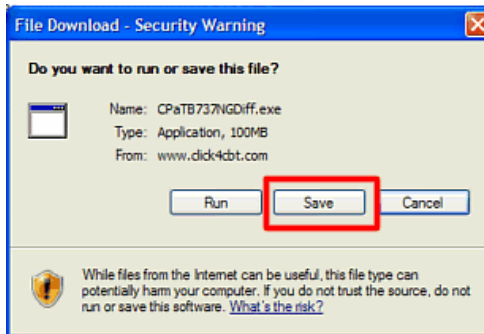
Download Overview:

- The download installer consists of one EXE file that can be downloaded to your desktop.
- After download, you will run the EXE. It will unzip to a temp. folder on your computer's hard drive.
- After unzip is complete, a module will automatically run to provide installation guidance to you.
- This module will display the available fixed and removable drives on your computer.
- You will select the drive you want to hold the program and the files will extract to the selected drive.
- After this, the CPaT activation page will appear and you will need to enter your activation code.

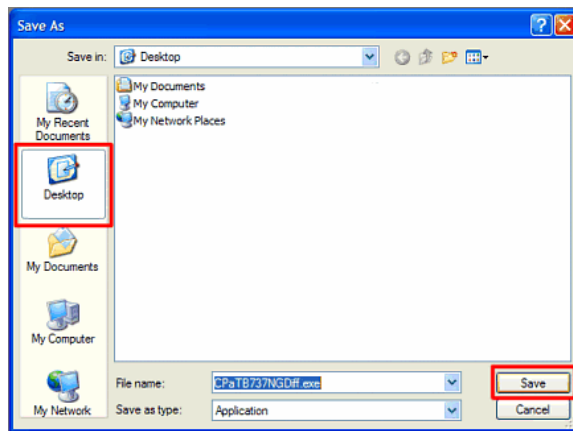
Download Instructions:

Internet required for download.

1. Go online and enter the supplied download address in your browser URL line.
2. Press the keyboard Enter key and you should see this popup:



3. Click "SAVE" and you should see this:



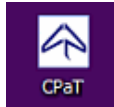
4. Select "DESKTOP" button and then Click "NEXT". The program should begin to download.



DOWNLOAD GUIDE for CPaT LOCAL PROGRAM

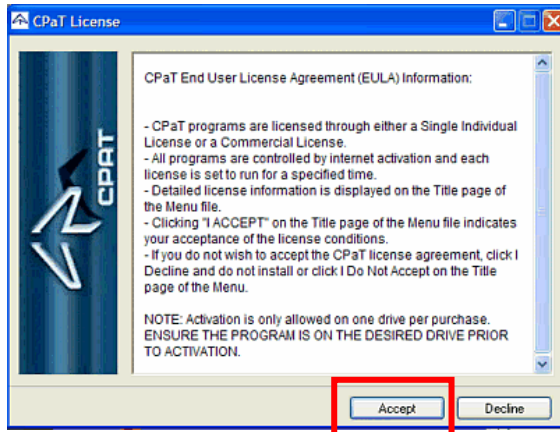
Download Instructions (continued):

5. When the download is complete, you will see an icon like this on your desktop:

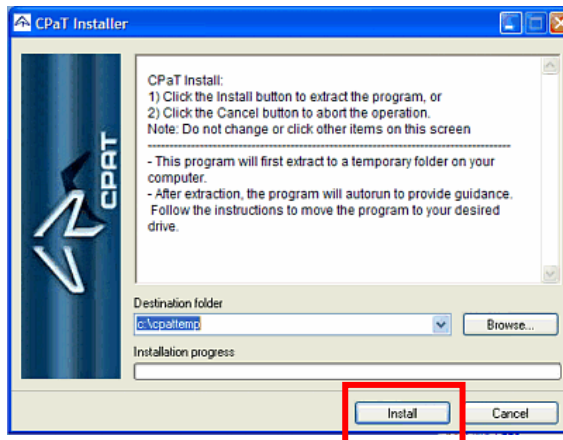


Internet not required
for remaining steps.

6. Double click the ICON to launch the installer. You should see this when the installer launches:



7. Read the EULA information and click "ACCEPT" or "DECLINE" as appropriate. If you click DECLINE the installation will abort. If you click ACCEPT you will see this:



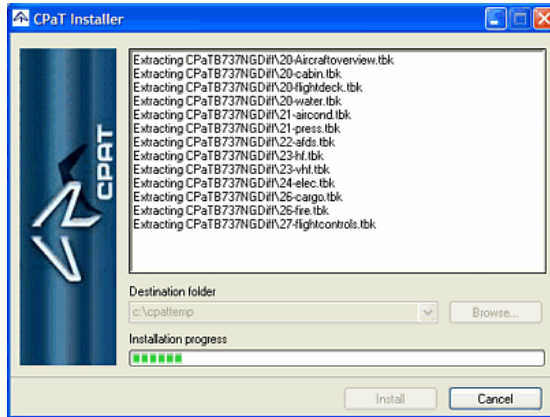
8. Select "INSTALL" (to continue) or "CANCEL" (if you wish to abort). **DO NOT** change the text in the Destination Folder line and **DO NOT** click the Browse button!



DOWNLOAD GUIDE for CPaT LOCAL PROGRAM

Download Instructions (continued):

9. The unzip progress is displayed until it is complete. You will see this during unzip:



10. After the unzip is complete, a guidance module will automatically run with audio . It will explain your options for installation. Listen to this information and wait for the next page to appear.





DOWNLOAD GUIDE for CPaT LOCAL PROGRAM

Download Instructions (no USB Flash Drive available):

11. If you have a USB Flash Drive plugged in, skip to step # 16. This example shows the Drive Information for a computer with two fixed drives ("c" and "d") available.

--Drive Information --
Select a Drive to Extract the Program To

Drive Letter	Type	Free Space
Hard Drives - With Available Free Space		
C:\	Hard Drive	32144 MB
D:\	Hard Drive	77021 MB
USB Flash Drives - With Available Free Space - Recommended		
None Available		

Color Legend

- Flash Drive Selected
- Hard Drive Selected
- No Drive Selected
- Selectable Drive

REFRESH
The Refresh Button updates the Drive Information List.

Select the Desired Drive Above

Extract to Drive: - None

EXTRACT

Now Select a Drive that you would like to activate your program on and click the Extract Button.
If the Drive you desire is not on the list on the right please insert it now and click the Refresh button to update the list.

EXIT

12. Click to select the drive you want to hold the program. The text of the selected hard drive will display yellow and the EXTRACT button will display yellow.
 13. Click the "EXTRACT" button to install the program to your selected drive.
 14. After the program is installed, the courseware will launch and you will see the activation screen.
 15. Refer to the ACTIVATION GUIDE to activate the courseware. Download/Install Complete.
- If you plug in a USB Flash Drive after this page is displayed, click the REFRESH button and the Flash Drive will be detected and displayed for you to select.



DOWNLOAD GUIDE for CPaT LOCAL PROGRAM

Download Instructions (USB Flash Drive available):

16. This example shows the Drive Information page for a computer with one USB Flash Drive available and two fixed drives (“c” and “d”) available.

Drive Letter	Type	Free Space
Hard Drives - With Available Free Space		
C:\	Hard Drive	32139 MB
D:\	Hard Drive	77021 MB
USB Flash Drives - With Available Free Space - Recommended		
I:\	USB Flash Drive	1048 MB

17. The Flash Drive is automatically selected if it is available. If you do not want the program installed to the Flash Drive, you must select a different drive.
18. Click the “EXTRACT” button to install the program to the selected drive.
19. After the program is installed, the courseware will launch and you will see the activation screen.
20. Refer to the ACTIVATION GUIDE to activate the courseware. Download/Install Complete.
- If you plug in a USB Flash Drive after this page is displayed, click the REFRESH button and the Flash Drive will be detected and displayed for you to select.