

# Access

## Learning Management Suite

### OVERVIEW

CPaT's **Access Learning Portal** provides your company with all the tools required for your students to train anywhere, anytime, across a wide variety of devices. It is our goal to provide unrestricted access to your staff so that they can be successful, and your company can provide effective and efficient training.

The CPaT Access learning management suite offers a **Learning Management System (LMS)** branded to your specifications, a powerful **Mobile App** and **CPaT I-Check**, a Biometric Student Verification System. Need connection to other SCORM training management systems? No problem - CPaT offers a Universal Application Programming Interface that can connect all your systems together with our products (**Universal API**).



### CPAT LMS

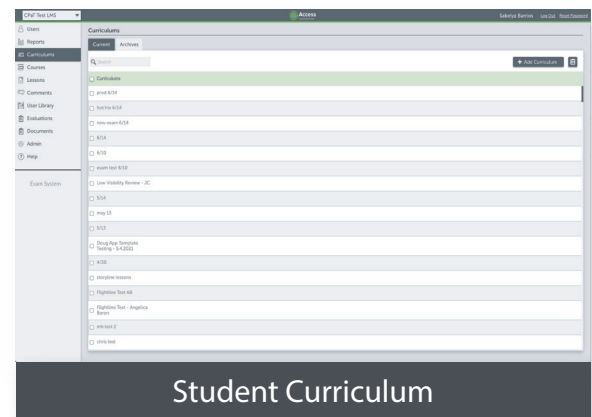
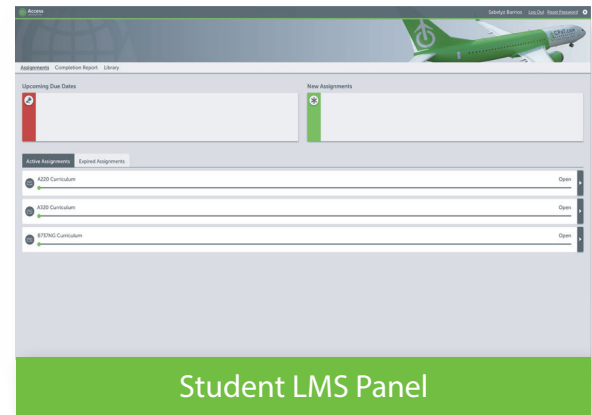
CPaT's LMS provides a simple and easy to use learning interface for both instructors and students:

#### Students

- Dynamic exam system
- Qualifications tracking and management
- Digital grade sheets
- Student records and completion tracking
- Offline and online training convenience with CPaT's Mobile App
- Microsoft Azure network ensures access even in the most remote locations

#### Administrators

- GDPR Compliance
- LMS branded to your company
- Intuitive navigation and course assigning
- Self-upload content
- Robust administrator controls
- Administrator notifications and e-mailed reports
- Student to instructor comments



# Access

## Learning Management Suite

### MOBILE APP

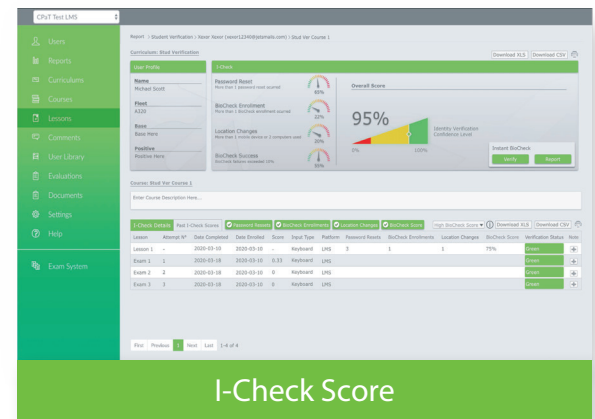
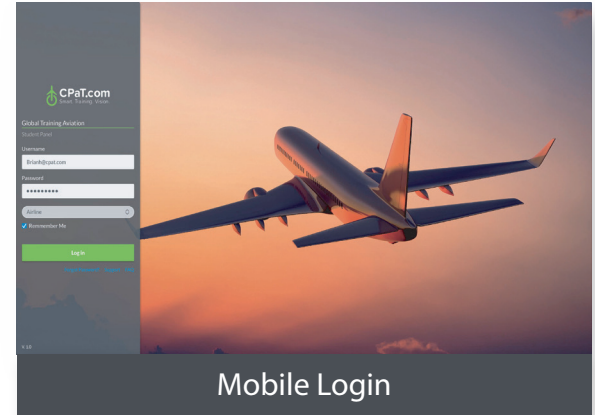
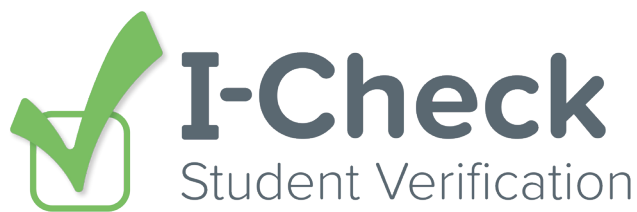
- Allows students to access training both on-line and off-line
- When used off-line, training data syncs for the student when an internet connection is next made
- Compatible with iOS, Android and Microsoft Windows compatible devices

### UNIVERSAL API

- Universal API allows the CPaT LMS to integrate with any third-party system if they can provide an API or consume a CPaT API

### CPAT I-CHECK

- Biometric student verification system
- Analyses key strokes and behavior to ensure identity of student completing training
- No special user training or equipment required
- GDPR compliant



For more information on student identity verification methods and CPaT I-Check, please visit our website or contact your local sales representative.